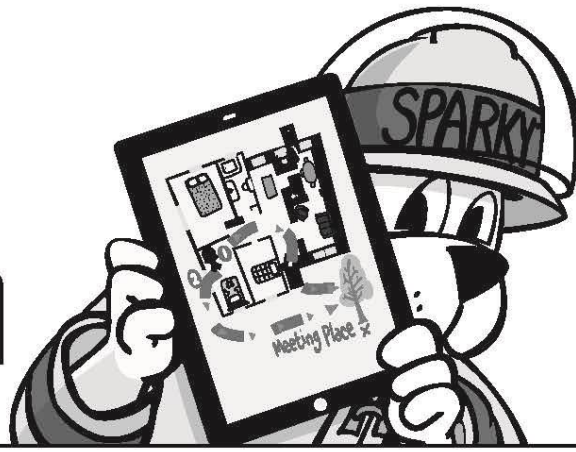


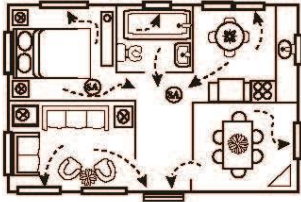
How to make a Home Fire Escape Plan



Memorize your fire department's emergency phone number and write it below:



The Official Sponsor of Fire Prevention Week Since 1922



- Draw a floor plan or a map of your home. Show all **doors** and **windows**.
- Mark **two ways out** of each room.
- Mark all of the **smoke alarms** with (SA). Smoke alarms should be in each sleeping room, outside each sleeping area, and on every level of the home.
- Pick a family **meeting place** outside where everyone can meet.
- Remember, **practice** your plan at least **twice a year!**

A large rectangular area filled with a fine grid of lines, intended for drawing a floor plan of a home as part of creating a fire escape plan.

Grown-ups: Children don't always wake up when the smoke alarm sounds. Know what your child will do before a fire occurs. Get more information on smoke alarms and escape planning at www.nfpa.org/factsheets.