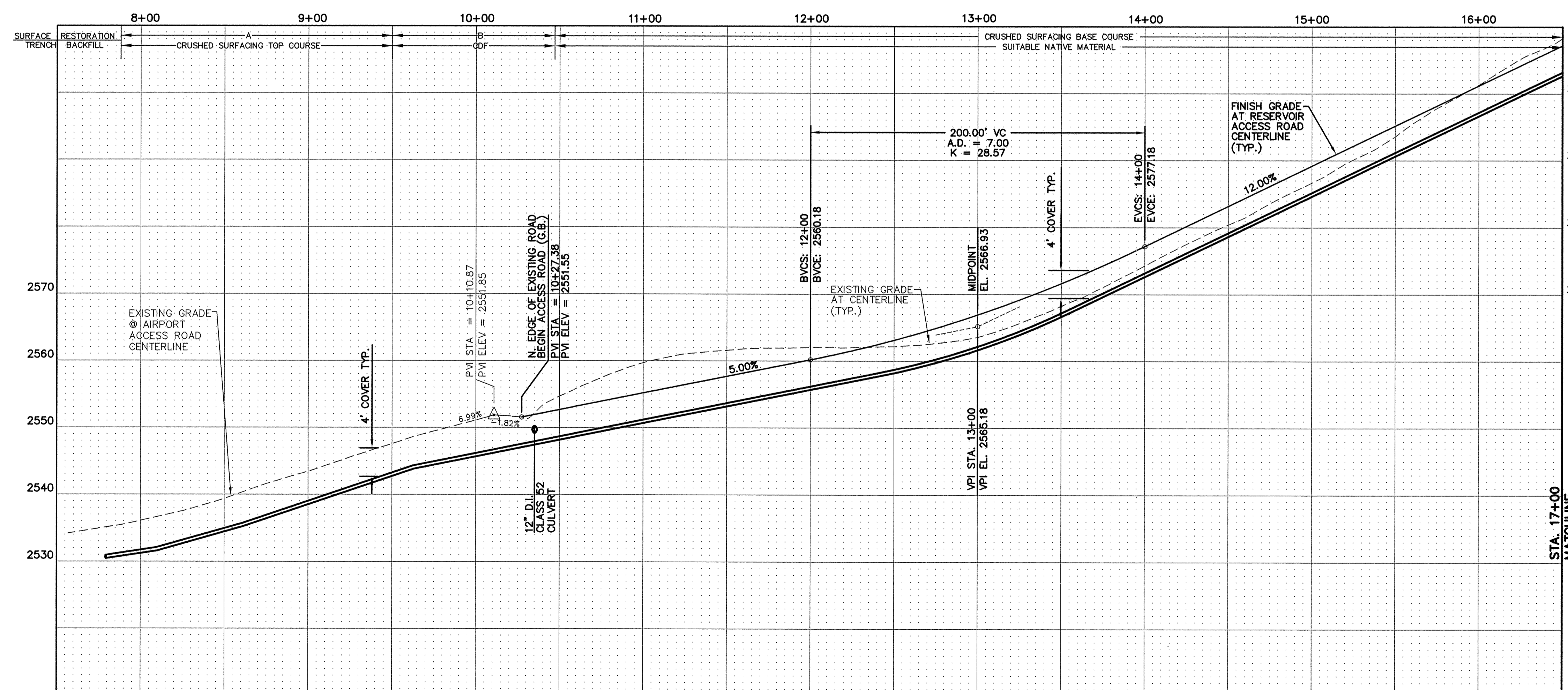
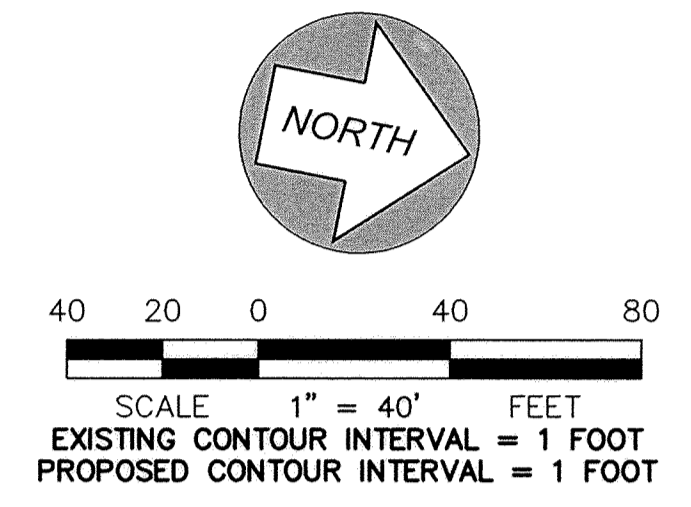
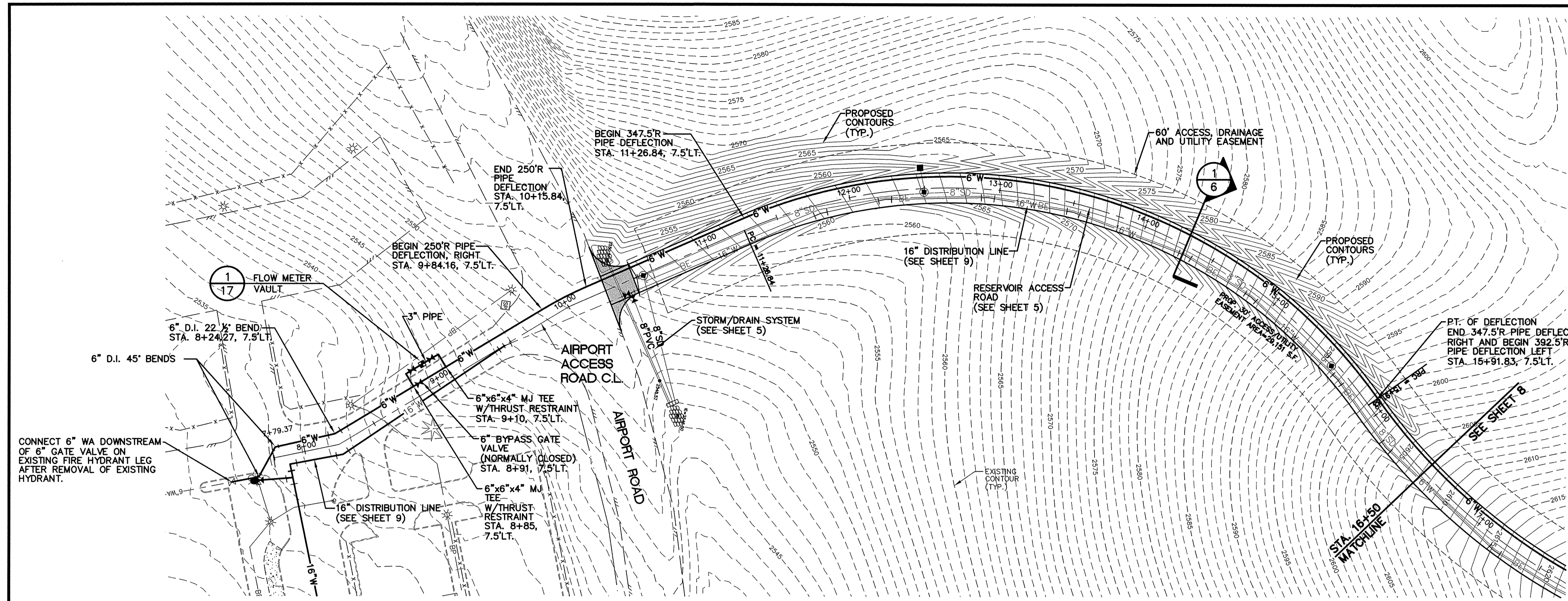


UNDERGROUND SERVICE ALERT
 ONE-CALL NUMBER
1-800-424-5555
 CALL TWO BUSINESS DAYS
 BEFORE YOU DIG



FINISHED SURFACE NOTES

A FINISHED SURFACE
 PER CITY OF PULLMAN
 STANDARD DRAWING NO. 21

B FINISHED SURFACE
 PER CITY OF PULLMAN
 STANDARD DRAWING NO. 21
 W/ CDF FOR TRENCH BACKFILL

UTILITY STATEMENT

THE UNDERGROUND UTILITIES SHOWN HAVE BEEN LOCATED AS ACCURATELY AS POSSIBLE FROM FIELD SURVEY INFORMATION AND EXISTING DRAWINGS. TAYLOR ENGINEERING, INC. MAKES NO GUARANTEES THAT THE UNDERGROUND UTILITIES SHOWN COMPRISE ALL SUCH UTILITIES IN THE AREA, EITHER IN SERVICE OR ABANDONED. FURTHER, WE DO NOT WARRANT THAT THE UNDERGROUND UTILITIES SHOWN ARE IN EXACT LOCATION INDICATED, ALTHOUGH WE DO CERTIFY THAT THEY ARE LOCATED AS ACCURATELY AS POSSIBLE FROM INFORMATION AVAILABLE.

RECORD DRAWING
 PER FIELD SURVEY

1	2/10	DWC	CRG	RECORD DRAWINGS
No.	Date	By	Ckd	Appr.
				Revisions

Drawn DJJ Date 6/08

Designed BAN,MFM,CRG 11/08

Checked By RGP 6/09

The Engineer's Seal was removed during the As-Built process. The information of record is as follows:

Taylor Engineering, Inc.
 Civil Design and Land Planning
 245 E. Main St.
 Pullman, Washington 99163
 (509) 334-5115 FAX (509) 334-5956

VERTICAL DATUM:
 NAVD 83

CITY OF PULLMAN, WASHINGTON
 ENGINEERING DIVISION

SCALE

HORIZ. 1"=40'

VERT. 1"=10'

AIRPORT FIRE FLOW SYSTEM		WATER
6" WATER FILL LINE STA. 7+79 TO 16+50		SHEET
		7
		22