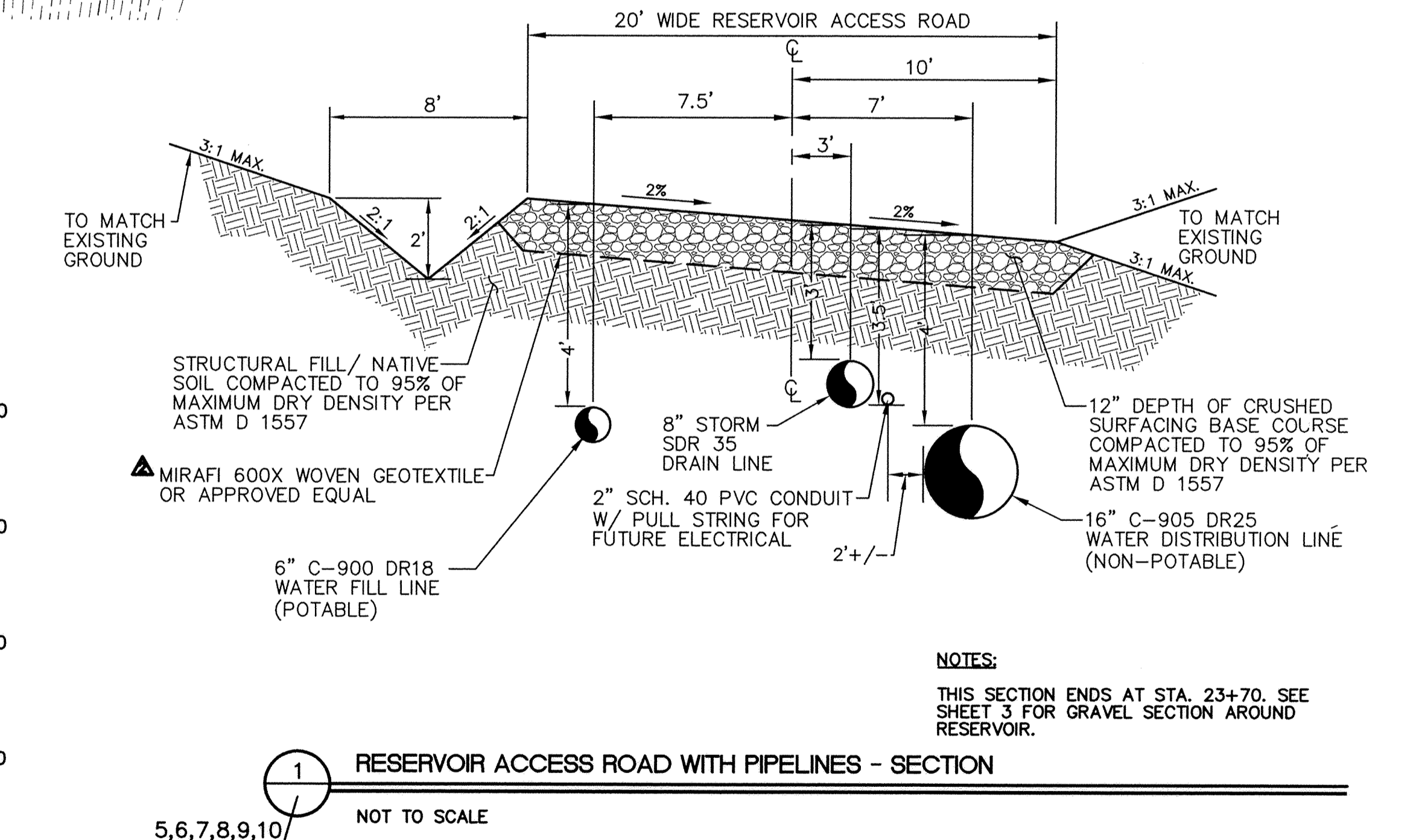
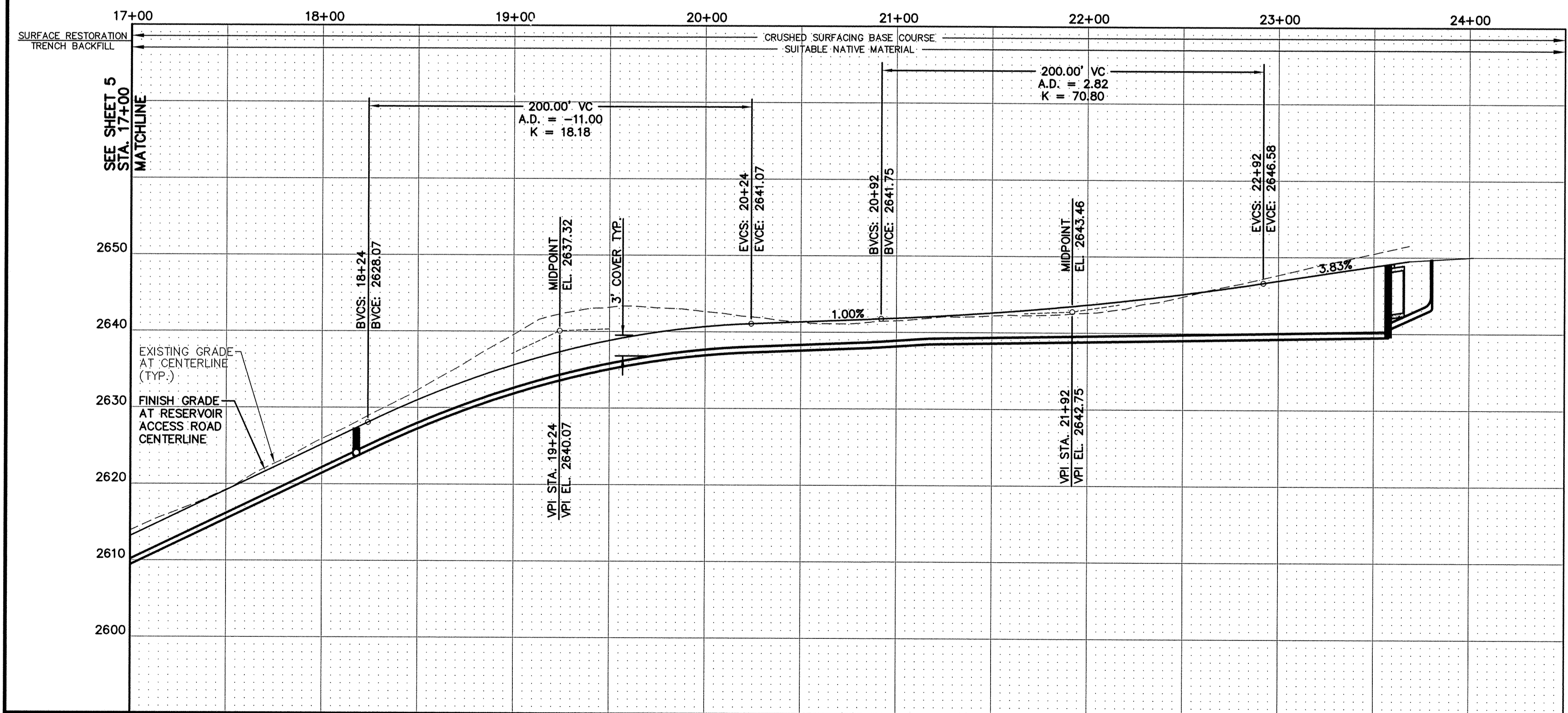


UNDERGROUND SERVICE ALERT
ONE-CALL NUMBER
1-800-424-5555
CALL TWO BUSINESS DAYS
BEFORE YOU DIG



UTILITY STATEMENT
THE UNDERGROUND UTILITIES SHOWN HAVE BEEN LOCATED AS ACCURATELY AS POSSIBLE FROM FIELD SURVEY INFORMATION AND EXISTING DRAWINGS. TAYLOR ENGINEERING, INC. MAKES NO GUARANTEES THAT THE UNDERGROUND UTILITIES SHOWN COMPRISE ALL SUCH UTILITIES IN THE AREA, EITHER IN SERVICE OR ABANDONED. FURTHER, WE DO NOT WARRANT THAT THE UNDERGROUND UTILITIES SHOWN ARE IN EXACT LOCATION INDICATED, ALTHOUGH WE DO CERTIFY THAT THEY ARE LOCATED AS ACCURATELY AS POSSIBLE FROM INFORMATION AVAILABLE.

1	2/10	DWC	CRG	RECORD DRAWINGS
2	7/09		CRG	ADDENDUM #2
No.	Date	By	Ckd.	Appr.
				Revisions

Drawn	Date
DJJ	6/08
Designed	
BAN,MFM,CRG	11/08
Checked By	
RGP	6/09

Taylor Engineering, Inc.
Civil Design and Land Planning
245 E. Main St.
Pullman, Washington 99163
(509) 334-5115 FAX (509) 334-5956

VERTICAL DATUM:
NAVD 83

CITY OF PULLMAN, WASHINGTON
ENGINEERING DIVISION

SCALE
HORIZ. 1"=40'
VERT. 1"=10'

AIRPORT FIRE FLOW SYSTEM
RESERVOIR ACCESS ROAD AND 8' STORM/DRAIN LINE
STA. 17+00 TO STA. 23+80
RESERVOIR ACCESS ROAD WITH PIPELINES - SECTION

SHEET
6
22