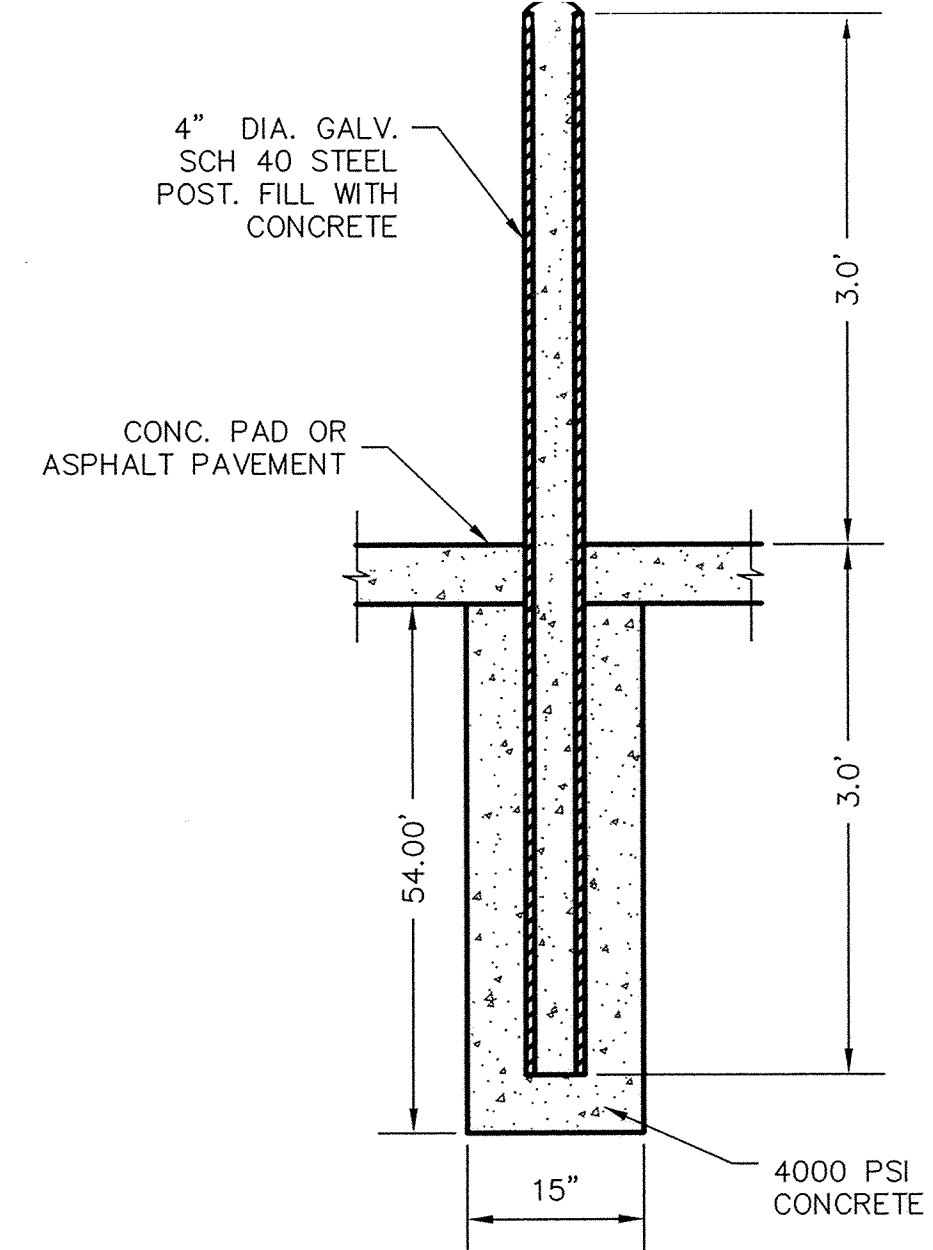
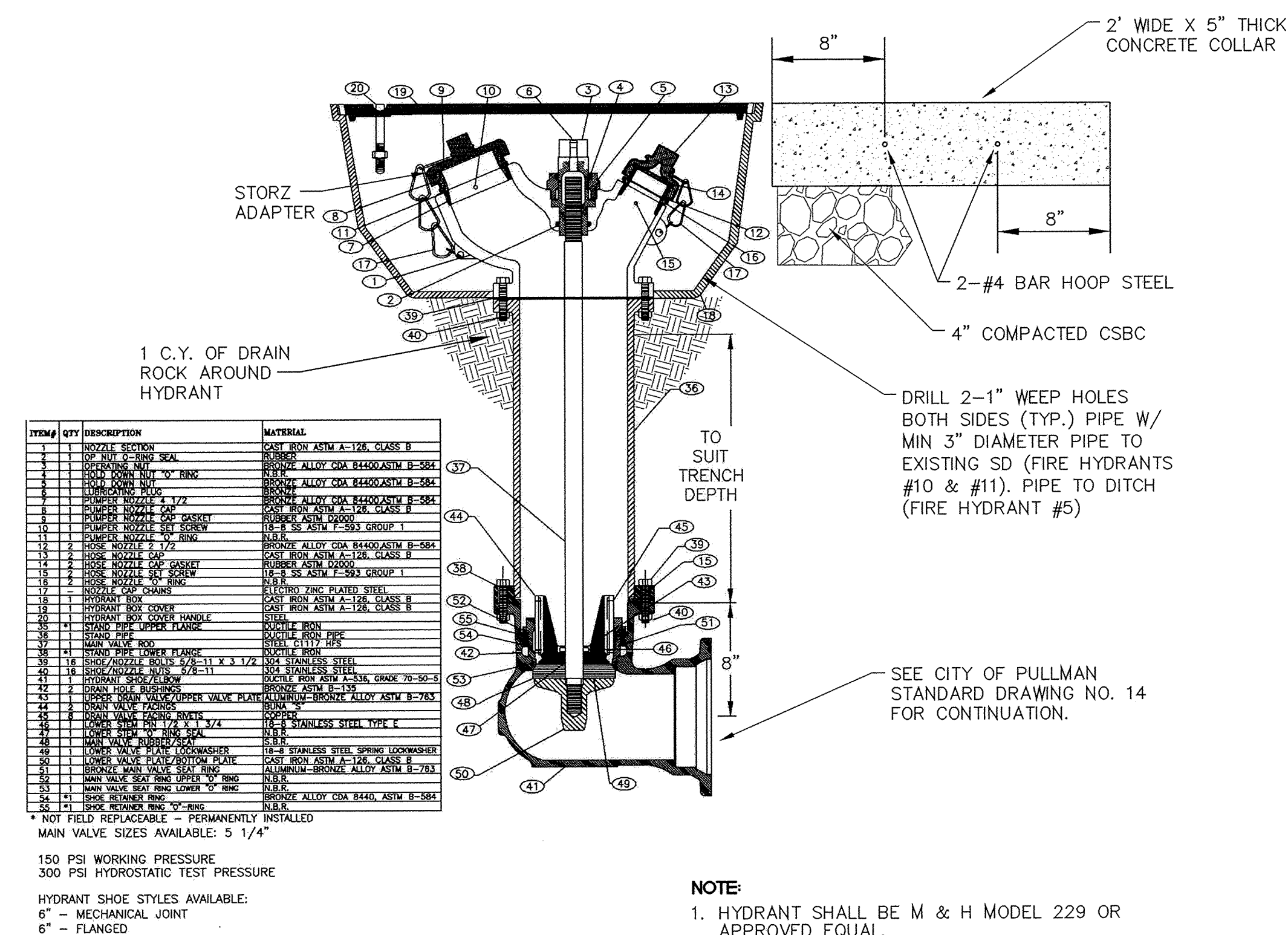


1
7 FLOW METER VAULT
SCALE: N.T.S.

- ① 3" FLOW METER - (FURNISHED BY CITY AND INSTALLED BY CONTRACTOR)
- ② 4"x3" MJ REDUCER W/RESTRAINED JOINT
- ③ 4" RESILIENT WEDGE GATE VALVE MJ X MJ
- ④ 30" DIAMETER MANHOLE FRAME AND COVER W/ NEOPRENE GASKET SEAL AND CONCRETE COLLAR PER STANDARD DWG. #SD-508. STAMP 'WATER' ON COVER. CENTER OVER FLOW METER. DRILL 2" HOLE IN COVER.
- ⑤ 3" D.I. PIPE, FL & PE
- ⑥ 3" CLASS 53 D.I. SPOOL FL & PE
- ⑦ 3" FL X FL SILENT GLOBE CHECK VALVE CLA-VAL MODEL 581 OR APPROVED EQUAL
- ⑧ STANCON MODEL S92 STAINLESS STEEL PIPE SUPPORT WITH HEIGHT ADJUSTER
- ⑨ 9" MIN. CSBC 90% MIN. COMPACTION OF MODIFIED PROCTOR
- ⑩ VALVE BOX AND COVER PER CITY OF PULLMAN STANDARD DWG. NO. 11
- ⑪ VITALLIC GROOVED PIPE COUPLING (RESTRAINED JOINT) OR APPROVED EQUAL
- ⑫ 4" C900 DR25 PVC PIPE



2
4 BOLLARD DETAIL
SCALE: N.T.S.



ITEM#	QTY	DESCRIPTION	MATERIAL
1	1	HYDRANT SHOE	CAST IRON ASTM A-118, CLASS B
2	1	CONCRETE COLLAR	CONCRETE
3	1	HYDRANT BODY	CAST IRON ASTM A-118, CLASS B
4	1	HYDRANT NUT	CAST IRON ASTM A-118, CLASS B
5	1	HYDRANT WASHER	CAST IRON ASTM A-118, CLASS B
6	1	HYDRANT GASKET	NEOPRENE
7	1	HYDRANT O-RING	NITRILE RUBBER
8	1	HYDRANT PIN	STEEL
9	1	HYDRANT PIN WASHER	STEEL
10	1	HYDRANT PIN NUT	STEEL
11	1	HYDRANT PIN WASHER	STEEL
12	1	HYDRANT PIN NUT	STEEL
13	1	HYDRANT PIN WASHER	STEEL
14	1	HYDRANT PIN NUT	STEEL
15	1	HYDRANT PIN WASHER	STEEL
16	1	HYDRANT PIN NUT	STEEL
17	1	HYDRANT PIN WASHER	STEEL
18	1	HYDRANT PIN NUT	STEEL
19	1	HYDRANT PIN WASHER	STEEL
20	1	HYDRANT PIN NUT	STEEL
21	1	HYDRANT PIN WASHER	STEEL
22	1	HYDRANT PIN NUT	STEEL
23	1	HYDRANT PIN WASHER	STEEL
24	1	HYDRANT PIN NUT	STEEL
25	1	HYDRANT PIN WASHER	STEEL
26	1	HYDRANT PIN NUT	STEEL
27	1	HYDRANT PIN WASHER	STEEL
28	1	HYDRANT PIN NUT	STEEL
29	1	HYDRANT PIN WASHER	STEEL
30	1	HYDRANT PIN NUT	STEEL
31	1	HYDRANT PIN WASHER	STEEL
32	1	HYDRANT PIN NUT	STEEL
33	1	HYDRANT PIN WASHER	STEEL
34	1	HYDRANT PIN NUT	STEEL
35	1	HYDRANT PIN WASHER	STEEL
36	1	HYDRANT PIN NUT	STEEL
37	1	HYDRANT PIN WASHER	STEEL
38	1	HYDRANT PIN NUT	STEEL
39	1	HYDRANT PIN WASHER	STEEL
40	1	HYDRANT PIN NUT	STEEL
41	1	HYDRANT PIN WASHER	STEEL
42	1	HYDRANT PIN NUT	STEEL
43	1	HYDRANT PIN WASHER	STEEL
44	1	HYDRANT PIN NUT	STEEL
45	1	HYDRANT PIN WASHER	STEEL
46	1	HYDRANT PIN NUT	STEEL
47	1	HYDRANT PIN WASHER	STEEL
48	1	HYDRANT PIN NUT	STEEL
49	1	HYDRANT PIN WASHER	STEEL
50	1	HYDRANT PIN NUT	STEEL
51	1	HYDRANT PIN WASHER	STEEL
52	1	HYDRANT PIN NUT	STEEL
53	1	HYDRANT PIN WASHER	STEEL
54	1	HYDRANT PIN NUT	STEEL
55	1	HYDRANT PIN WASHER	STEEL
56	1	HYDRANT PIN NUT	STEEL
57	1	HYDRANT PIN WASHER	STEEL
58	1	HYDRANT PIN NUT	STEEL
59	1	HYDRANT PIN WASHER	STEEL
60	1	HYDRANT PIN NUT	STEEL

3
12,14 BELOW GRADE HYDRANT DETAIL
SCALE: N.T.S.

No.	Date	By	Ckd.	Appr.	Revisions
1	2/10	DWC		CRG	RECORD DRAWINGS

Drawn	Date
DFT,DJJ	6/08
Designed	Date
BAN,MFM,CRG	11/08
Checked By	Date
RGP	6/09

The Engineer's Seal was removed during the AS-Built process. The information of record is as follows:

Engineer's Name	Eng.'s No.	Date on job
CLM & GORC	179639	6/20/09

Taylor Engineering, Inc.
Civil Design and Land Planning
245 E. Main St.
Pullman, Washington 99163
(509) 334-5115 FAX (509) 334-5956

VERTICAL DATUM:
NAVD 83

CITY OF PULLMAN, WASHINGTON
ENGINEERING DIVISION

SCALE
HORIZ. N/A
VERT. N/A

AIRPORT FIRE FLOW SYSTEM
DETAILS

DETAIL
SHEET
17
22