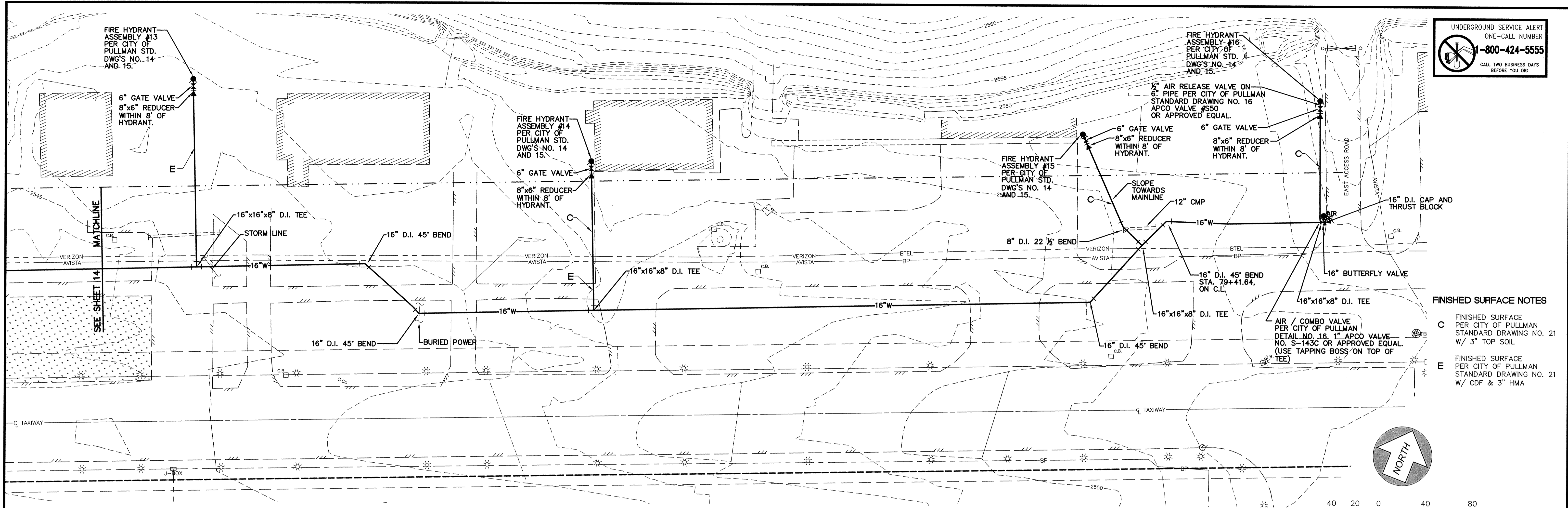
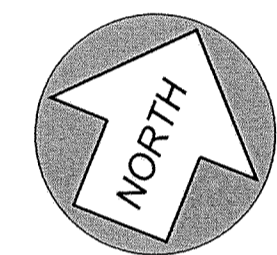


UNDERGROUND SERVICE ALERT  
ONE-CALL NUMBER  
**1-800-424-5555**  
CALL TWO BUSINESS DAYS  
BEFORE YOU DIG



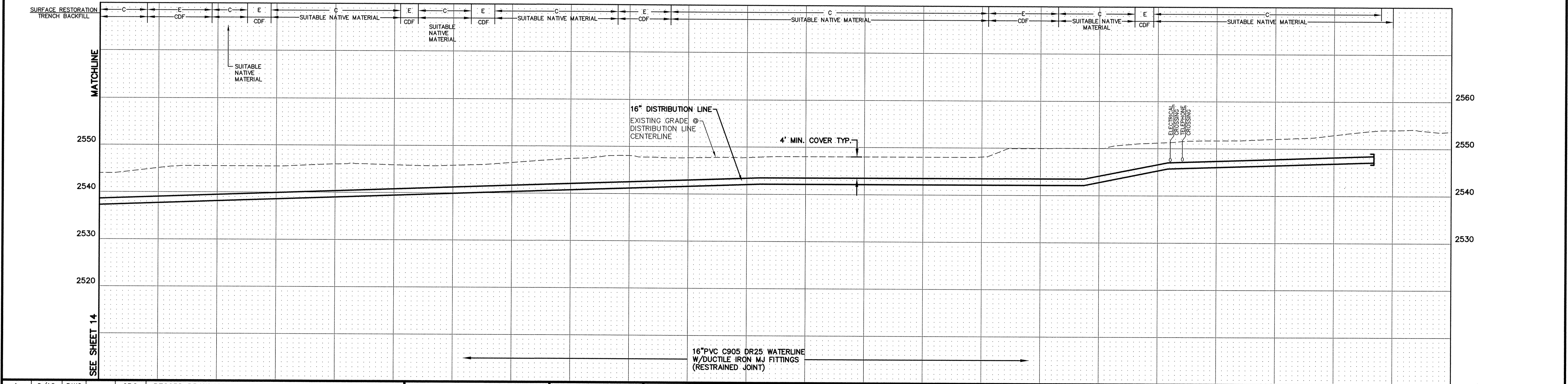
**FINISHED SURFACE NOTES**  
**C** FINISHED SURFACE PER CITY OF PULLMAN STANDARD DRAWING NO. 21 W/ 3" TOP SOIL  
**E** FINISHED SURFACE PER CITY OF PULLMAN STANDARD DRAWING NO. 21 W/ CDF & 3" HMA



40 20 0 40 80  
 SCALE 1" = 40' FEET  
 EXISTING CONTOUR INTERVAL = 1 FOOT  
 PROPOSED CONTOUR INTERVAL = 1 FOOT

**RECORD DRAWING PER FIELD SURVEY**

**UTILITY STATEMENT**  
 THE UNDERGROUND UTILITIES SHOWN HAVE BEEN LOCATED AS ACCURATELY AS POSSIBLE FROM FIELD SURVEY INFORMATION AND EXISTING DRAWINGS. TAYLOR ENGINEERING, INC. MAKES NO GUARANTEES THAT THE UNDERGROUND UTILITIES SHOWN COMPRISE ALL SUCH UTILITIES IN THE AREA, EITHER IN SERVICE OR ABANDONED. FURTHER, WE DO NOT WARRANT THAT THE UNDERGROUND UTILITIES SHOWN ARE IN EXACT LOCATION INDICATED, ALTHOUGH WE DO CERTIFY THAT THEY ARE LOCATED AS ACCURATELY AS POSSIBLE FROM INFORMATION AVAILABLE.



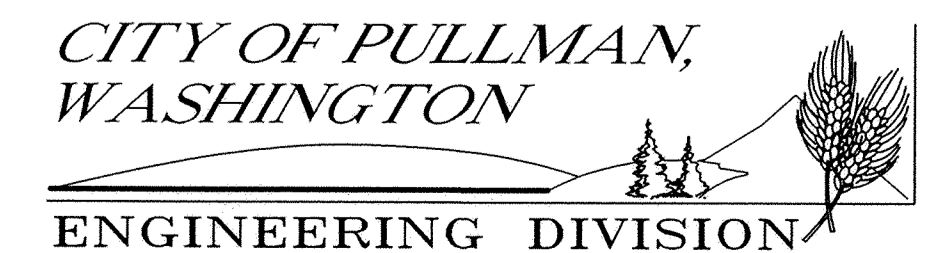
1	2/10	DWC	CRG	RECORD DRAWINGS
No.	Date	By	Ckd.	Appr.
				Revisions

**Drawn** DJJ **Date** 6/08  
**Designed** CRG **Date** 11/08  
**Checked By** RGP **Date** 6/09

The Engineer's Seal was removed during the As-Built process. The information of record is as follows:  
 Engineer's Name: CALVIN G. BARR  
 Exp. No.: 179630  
 Exp. Date: 8/15/09

**Taylor Engineering, Inc.**  
 Civil Design and Land Planning  
 245 E. Main St.  
 Pullman, Washington 99163  
 (509) 334-5115 FAX (509) 334-5956

VERTICAL DATUM:  
NAVD 83



**SCALE**  
**HORIZ.** 1"=40'  
**VERT.** 1"=10'

<b>AIRPORT FIRE FLOW SYSTEM</b>	<b>WATER</b>
16" DISTRIBUTION LINE STA. 70+00 TO 80+84	<b>SHEET</b> 15 22