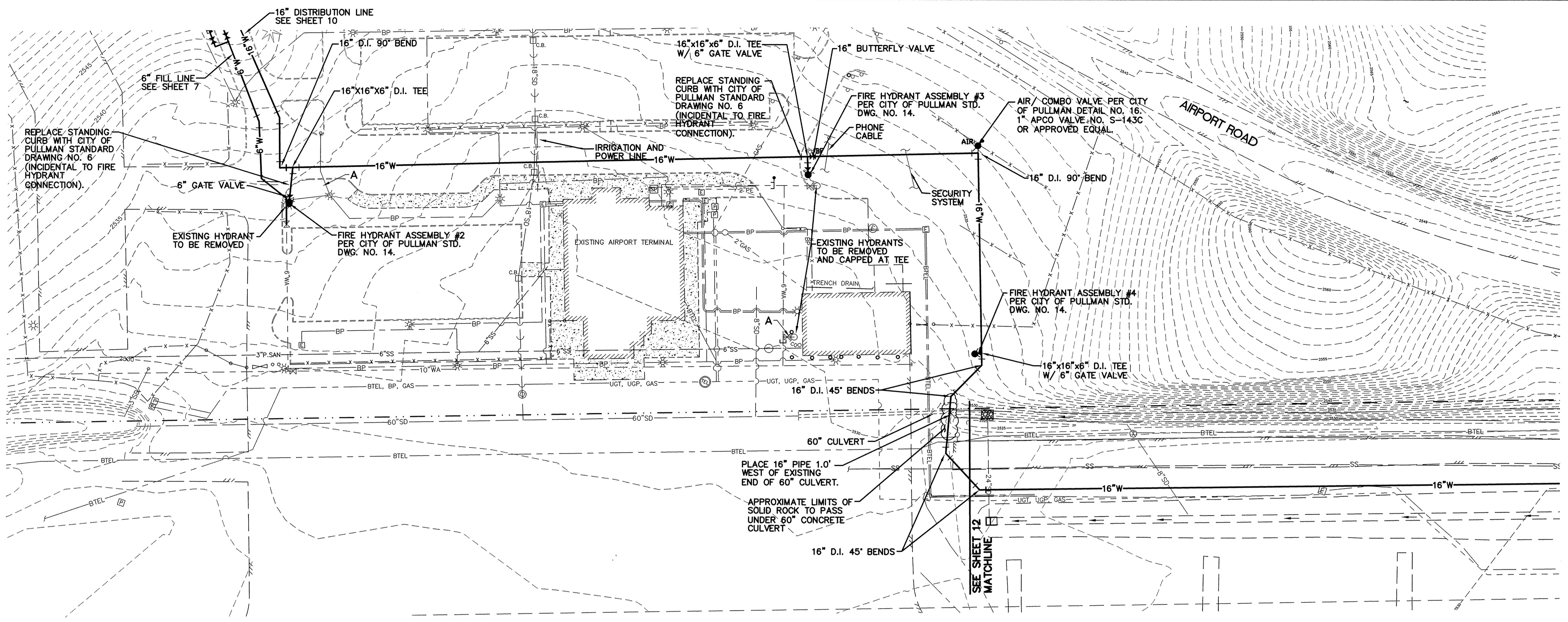
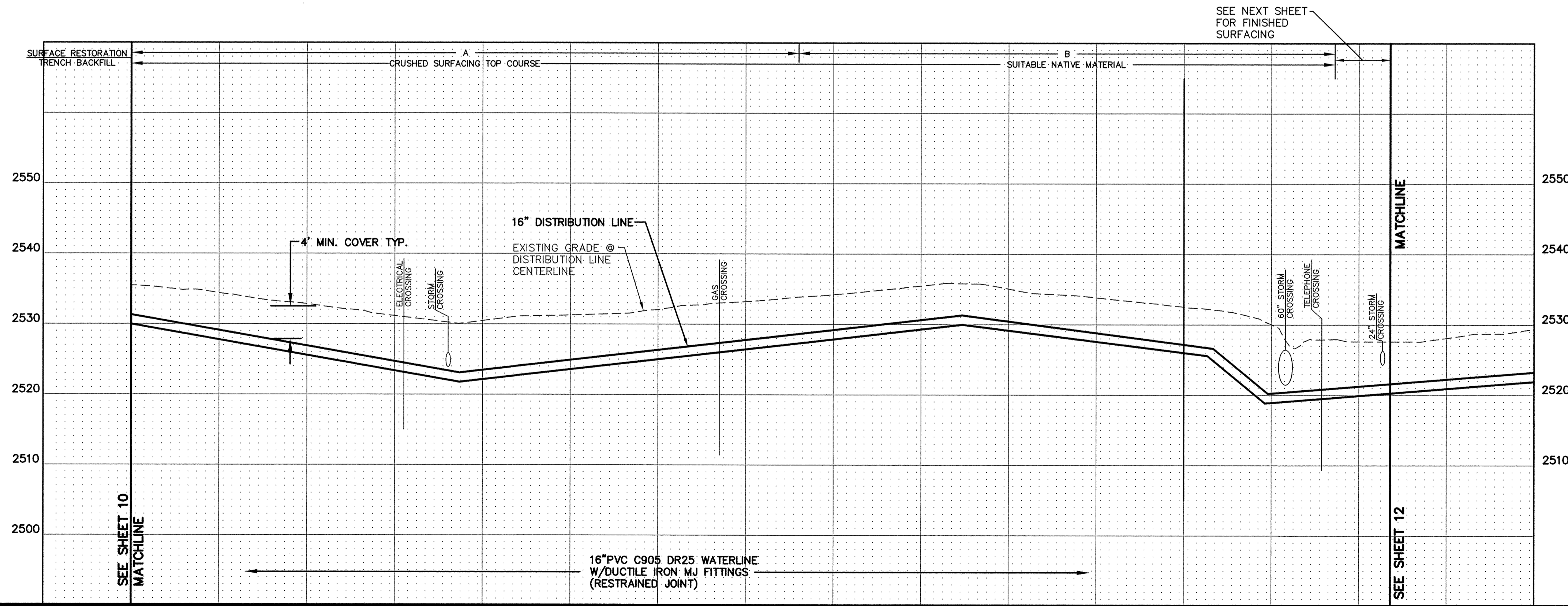


SCALE 1" = 40' FEET  
 EXISTING CONTOUR INTERVAL = 1 FOOT  
 PROPOSED CONTOUR INTERVAL = 1 FOOT



**FINISHED SURFACE NOTES**

- A FINISHED SURFACE PER CITY OF PULLMAN STANDARD DRAWING NO. 21
- B FINISHED SURFACE PER CITY OF PULLMAN STANDARD DRAWING NO. 21 W/ 4" C.S.T.C.



FITTING	BLOCK BEARING AREA (sq)(SQUARE FEET)	GRAVITY BLOCK VOLUME (CUBIC YARDS)
11.25'	2.7	1.5
22.5'	5.4	2.8
45'	10.7	5.3
90'	19.7	N/A
PLUGS & TEES	14.0	N/A

**NOTES & LEGEND:**  
 1. THIS TABLE APPLIES TO ALL 16" FITTINGS AND JOINTS; VERTICAL AND HORIZONTAL ON THE 16" DISTRIBUTION LINE AS SHOWN ON SHEETS 9-15 FROM STA 23+47 @ THE RESERVOIR TO STA 79+41 ON SHEET 15.  
 2. THE CALCULATIONS IN THIS TABLE ARE FROM THE CITY OF PULLMAN STANDARD DRAWINGS NO. 18 & 19 AND ARE PROVIDED AS A CONVENIENCE TO THE CONTRACTOR.

**RECORD DRAWING PER FIELD SURVEY**

**UTILITY STATEMENT**

THE UNDERGROUND UTILITIES SHOWN HAVE BEEN LOCATED AS ACCURATELY AS POSSIBLE FROM FIELD SURVEY INFORMATION AND EXISTING DRAWINGS. TAYLOR ENGINEERING, INC. MAKES NO GUARANTEES THAT THE UNDERGROUND UTILITIES SHOWN COMPRISE ALL SUCH UTILITIES IN THE AREA, EITHER IN SERVICE OR ABANDONED. FURTHER, WE DO NOT WARRANT THAT THE UNDERGROUND UTILITIES SHOWN ARE IN EXACT LOCATION INDICATED, ALTHOUGH WE DO CERTIFY THAT THEY ARE LOCATED AS ACCURATELY AS POSSIBLE FROM INFORMATION AVAILABLE.

No.	Date	By	Ckd.	Appr.	Revisions
1	2/10	DWC		CRG	RECORD DRAWINGS

<b>Drawn</b>	DJJ	<b>Date</b>	6/08
<b>Designed</b>	CRG		11/08
<b>Checked By</b>	RGP		6/09

The Engineer's Seal was removed during the As-Built process. The information of record is as follows:  
 Taylor Engineering, Inc. 179632 6/10/09

**Taylor Engineering, Inc.**  
 Civil Design and Land Planning  
 245 E. Main St.  
 Pullman, Washington 99163  
 (509) 334-5115 FAX (509) 334-5956

VERTICAL DATUM:  
NAVD 83



**SCALE**  
 HORIZ. 1" = 40'  
 VERT. 1" = 10'

AIRPORT FIRE FLOW SYSTEM	WATER
16" DISTRIBUTION LINE STA. 30+00 TO 37+00	SHEET
	11
	22